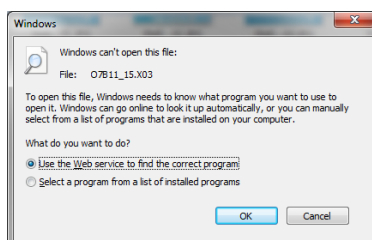


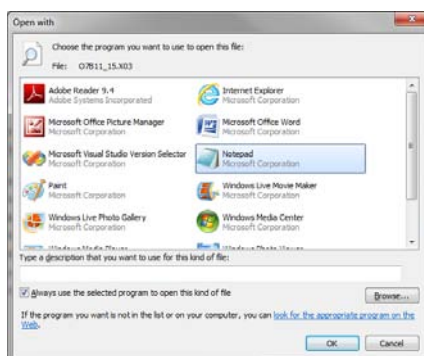
## Modifying the BTEC File O7B11\_15

To ensure that the correct point scores are being used in Performance Indicator (PI) for BTEC Level 3 results in Summer 2011, it is necessary to make modifications to the BTEC basedata file.

- Navigate to the directory that contains the BTEC basedata being used by the SIMS Examination Organiser module. This will usually be in the S:\SIMS\Examin
- Identify file O7B11\_15.xxx (where xxx will be a sequence number), highlight the file and right click. Choose **Open**, it is unlikely that Windows will know which application to use to open the file. Choose **Select a program from a list of installed programs**. Click **OK**



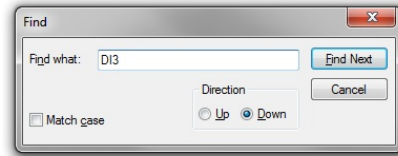
A list of programs is presented, select **Notepad** and click **OK**



- The file will open in Notepad.
- **It is essential when editing this file that the format and layout of the file is maintained. Ensure that after any changes made, the columns layout is retained**

O7B11_15.X02 - Notepad						
File Edit Format View Help						
017B11_157811BEDEXCEL	13					
037B11_157811002						
05K5344AK5544	BTECFDIC	E	10058114APPLIED SCIENCE	N00000	13	01
05AG312AAG312	BTECFCEC	E	10055587APPLIED SCIENCE	N00000	13	01
05AH002AAH002	BTECFCEC	E	10056658RETAIL	N00000	13	01
05AH005AAH005	BTECFDIC	E	5001397XCONSTRUCTION	N00000	13	01
05AH006AAH006	BTECNDIC	E	50015072SPORT (DEVELOPMENT, COACHING AND FITN	N00000	15	01
05AH007AAH007	BTECFCEC	E	50013986CONSTRUCTION	N00000	13	01
05AL005AAL005	BTECNCEC	E	50015084SPORT (DEVELOPMENT, COACHING AND FITN	N00000	1T	01
05AL008AAL008	BTECNCA C	E	50015096SPORT	N00000	1D	01
05AL009AAL009	BTECFCEC	E	10061782FISH HUSBANDRY	N00000	13	01
05AL24AAL247	BTECFCEC	E	10056725TRAVEL AND TOURISM	N00000	13	01
05AL248AAL248	BTECFDIC	E	10056737TRAVEL AND TOURISM	N00000	13	01
05AP645AAP645	EL FC C	E	50040704WORKSKILLS (ENTRY 3) (QCF)	N00000	1G	01
05AP646AAP646	EL FC C	E	50040753WORKSKILLS (ENTRY 3) (QCF)	N00000	1G	01
05AP647AAP647	BTECAW1C	E	5004073XWORKSKILLS (QCF)	N00000	1D	01
05AP648AAP648	BTECC1C	E	50040741WORKSKILLS (QCF)	N00000	1D	01
05AP649AAP649	BTECD1C	E	50040728WORKSKILLS (QCF)	N00000	1D	01
05AP650AAP650	BTECAW2C	E	50040765WORKSKILLS (QCF)	N00000	1D	01
05AP651AAP651	BTECE2C	E	50040716WORKSKILLS (QCF)	N00000	1D	01
05AP652AAP652	BTECD12C	E	50040777WORKSKILLS (QCF)	N00000	1D	01
05BG738ABG738	BTECNCA C	E	50014717BUSINESS	N00000	1D	01
05BP798ABP798	BTECNCEC	E	50014705BUSINESS	N00000	1T	01
05CH661ACH661	BTECC2C	E	50067199WORKSKILLS (QCF)	N00000	1D	01
05CN141ACN141	BTECAW3C	E	500666018WORKSKILLS (QCF)	N00000	1D	01
05CN142ACN142	BTECC3C	E	50065373WORKSKILLS (QCF)	N00000	1D	01
05CT581ACT581	BTECC1C	E	50073023SCIENCE, TECHNOLOGY, ENGINEERING ANDN	N00000	1D	01
05CT582ACT582	BTECC2C	E	50073217SCIENCE, TECHNOLOGY, ENGINEERING ANDN	N00000	1D	01
05DN089ADN089	BTECC2C	E	50075639APPLIED SCIENCE (QCF)	N00000	13	01
05DN090ADN090	BTECC2C	E	50074532APPLIED SCIENCE (QCF)	N00000	13	01
05DN091ADN091	BTECD12C	E	50066717APPLIED SCIENCE (QCF)	N00000	13	01
05EE233AEE233	BTECC2C	E	50072389CONSTRUCTION (QCF)	N00000	13	01
05EE234AEE234	BTECC2C	E	50072390CONSTRUCTION (QCF)	N00000	13	01
05EE235AEE235	BTECD12C	E	50072407CONSTRUCTION (QCF)	N00000	13	01
05FT665AFT665	BTECC2C	E	50080192TRAVEL AND TOURISM (QCF)	N00000	13	01
05FT666AFT666	BTECC2C	E	50080167TRAVEL AND TOURISM (QCF)	N00000	13	01

- Changes only have to be made to BTEC level 3 elements. These should be easily identified as they have a pattern of DI3 in the data. To find such occurrences, from the Notepad menu choose **Edit** and **Find** (or Control and F). Enter **DI3** as a search and click **Find Next**



- **Note that BTEC basedata is different for each school, the exams below are only for guidance, your data will have different elements. Also changes need to be made throughout the file and not just the first group of D13 occurrences.**

```

05JF629AJF629 BTECDI3C E 50067503BUSINESS (QCF) N00000 13 01
05JF630AJF630 BTECDI3C E 50067473BUSINESS (QCF) N00000 118 01
05JF631AJF631 BTECDI3C E 50067473BUSINESS (ACCOUNTING) (QCF) N00000 118 01
05JF632AJF632 BTECDI3C E 50067473BUSINESS (MARKETING) (QCF) N00000 118 01
05JF633AJF633 BTECDI3C E 50067473BUSINESS (HUMAN RESOURCES) (QCF) N00000 118 01
05JF634AJF634 BTECDI3C E 50067473BUSINESS (MANAGEMENT) (QCF) N00000 118 01
05JF635AJF635 BTECDI3C E 50067473BUSINESS (LAW) (QCF) N00000 118 01
05JF636AJF636 BTECDI3C E 50067473BUSINESS (ADMINISTRATION) (QCF) N00000 118 01
05JF637AJF637 BTECDI3C E 50067473BUSINESS (RETAIL) (QCF) N00000 118 01
05JF638AJF638 BTECDI3C E 50067473BUSINESS (LOGISTICS) (QCF) N00000 118 01
05JF639AJF639 BTECDI3C E 50067461BUSINESS (QCF) N00000 119 01
05JF640AJF640 BTECDI3C E 50067461BUSINESS (ACCOUNTING) (QCF) N00000 119 01
05JF641AJF641 BTECDI3C E 50067461BUSINESS (MARKETING) (QCF) N00000 119 01
05JF642AJF642 BTECDI3C E 50067461BUSINESS (HUMAN RESOURCES) (QCF) N00000 119 01
05JF643AJF643 BTECDI3C E 50067461BUSINESS (MANAGEMENT) (QCF) N00000 119 01
05JF644AJF644 BTECDI3C E 50067461BUSINESS (LAW) (QCF) N00000 119 01
05JF645AJF645 BTECDI3C E 50067461BUSINESS (ADMINISTRATION) (QCF) N00000 119 01
05JF646AJF646 BTECDI3C E 50067461BUSINESS (RETAIL) (QCF) N00000 119 01
05JF647AJF647 BTECDI3C E 50067461BUSINESS (LOGISTICS) (QCF) N00000 119 01

```

- Changes have to be made to any entry which has this DI3 pattern and either 13 or 119 in the 7<sup>th</sup> column of data. In the example, the first row contains DI3 and column 7 has 13. This means that gradeset 3 should be used with this element, this is the subsidiary diploma. Change the DI in the column to SD
- Grade set 18 is correct for DI3, so none of the next 9 rows against 118 need to be changed
- For rows with 119, grade set 19 should be used and this indicates that the extended diploma is the element. Change DI in each row to ED. The example below shows the file with the changes made.

```

05JF629AJF629 BTECDI3C E 50067503BUSINESS (QCF) N00000 13 01
05JF630AJF630 BTECDI3C E 50067473BUSINESS (QCF) N00000 118 01
05JF631AJF631 BTECDI3C E 50067473BUSINESS (ACCOUNTING) (QCF) N00000 118 01
05JF632AJF632 BTECDI3C E 50067473BUSINESS (MARKETING) (QCF) N00000 118 01
05JF633AJF633 BTECDI3C E 50067473BUSINESS (HUMAN RESOURCES) (QCF) N00000 118 01
05JF634AJF634 BTECDI3C E 50067473BUSINESS (MANAGEMENT) (QCF) N00000 118 01
05JF635AJF635 BTECDI3C E 50067473BUSINESS (LAW) (QCF) N00000 118 01
05JF636AJF636 BTECDI3C E 50067473BUSINESS (ADMINISTRATION) (QCF) N00000 118 01
05JF637AJF637 BTECDI3C E 50067473BUSINESS (RETAIL) (QCF) N00000 118 01
05JF638AJF638 BTECDI3C E 50067473BUSINESS (LOGISTICS) (QCF) N00000 118 01
05JF639AJF639 BTECDI3C E 50067461BUSINESS (QCF) N00000 119 01
05JF640AJF640 BTECDI3C E 50067461BUSINESS (ACCOUNTING) (QCF) N00000 119 01
05JF641AJF641 BTECDI3C E 50067461BUSINESS (MARKETING) (QCF) N00000 119 01
05JF642AJF642 BTECDI3C E 50067461BUSINESS (HUMAN RESOURCES) (QCF) N00000 119 01
05JF643AJF643 BTECDI3C E 50067461BUSINESS (MANAGEMENT) (QCF) N00000 119 01
05JF644AJF644 BTECDI3C E 50067461BUSINESS (LAW) (QCF) N00000 119 01
05JF645AJF645 BTECDI3C E 50067461BUSINESS (ADMINISTRATION) (QCF) N00000 119 01
05JF646AJF646 BTECDI3C E 50067461BUSINESS (RETAIL) (QCF) N00000 119 01
05JF647AJF647 BTECDI3C E 50067461BUSINESS (LOGISTICS) (QCF) N00000 119 01

```

- Continue through the file using the find routine to identify and change any similar instances.
- DI changes to SD where the 7<sup>th</sup> column shows 13 – Subsidiary Diploma
- DI changes to ED where the 7<sup>th</sup> column to 119 – Extended Diploma
- DI is unchanged where the 7<sup>th</sup> column is 118.
- Save the file to complete the editing process and exit Notepad