

## Updating SIMS .net using SOLUS 2 Autumn Main Release 2011

The Autumn Main Release of SIMS.net version 7.142 is an essential upgrade delivering files for the Spring (January) School Census in addition to number of enhancements and fixes. Schools must take the Autumn Main release in order to complete the School Census in January.

Schools should not take this upgrade if they have any outstanding issues with School Census which may result in them being asked by the Local Authority to re-create a census return.

This version of SIMS is only compatible with SQL 2008. Workstations and the SIMS server must have Microsoft .NET installed prior to the upgrade Windows 7 is an approved operating system with SIMS software.

FMS 6.142 is also upgraded delivering a number of enhancements and fixes detailed in the FMS 6.142 content document.

### It is essential that:

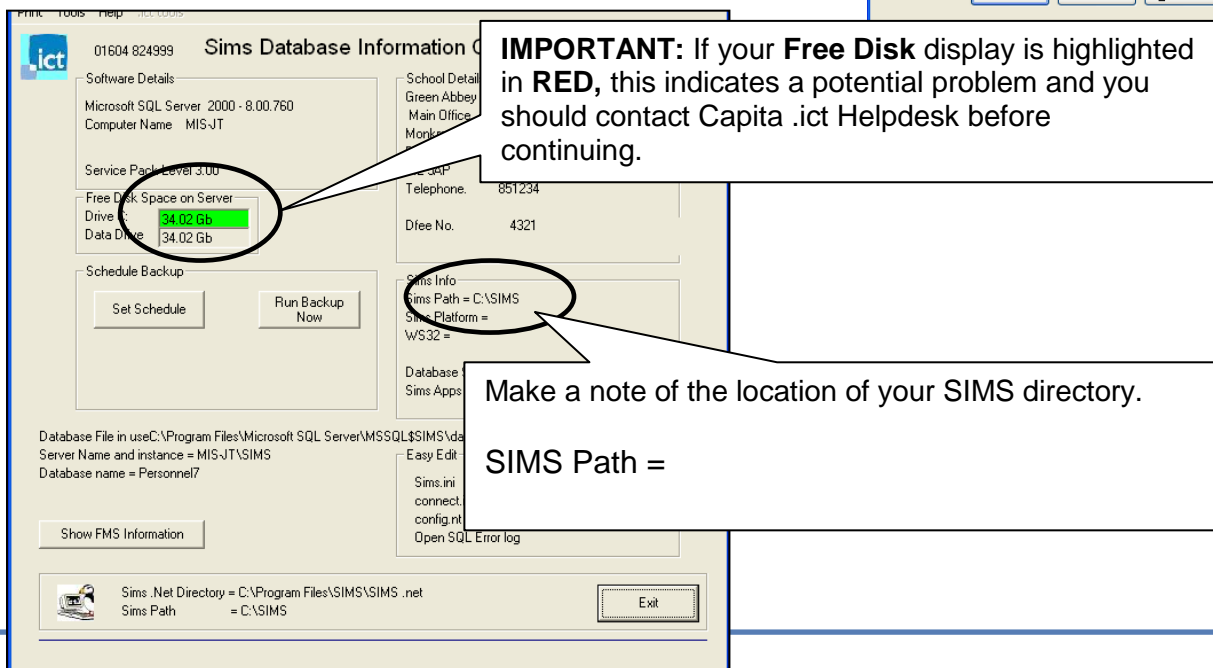
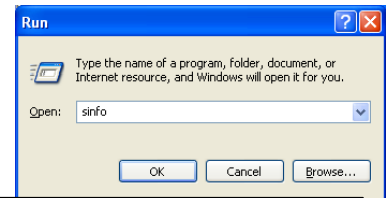
- **this upgrade is carried out on the SIMS File Server or, in the case of peer to peer installation, on the computer hosting the SIMS database.**
- **The user carrying out the upgrade must be logged in as Administrator (or with full Administrator rights).**
- **SQL must be on version SQL 2008**
- **Microsoft .NET 4 has been installed on the server and ALL SIMS workstations**

### The upgrade will be unsuccessful unless these conditions are satisfied.

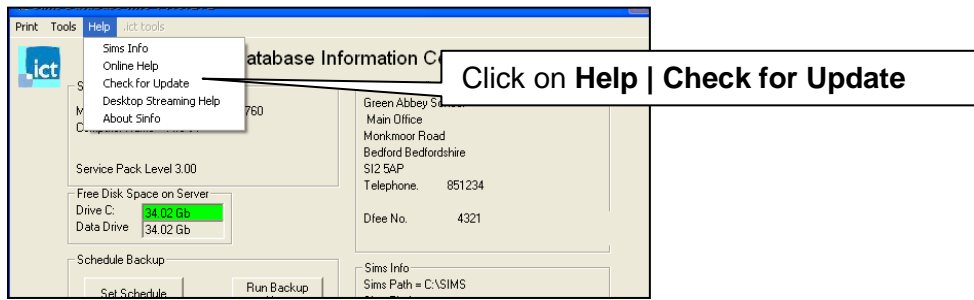
This document is intended to support the upgrade of your SIMS system to the Autumn Main 2011 release using SOLUS 2. SOLUS 3 users should refer to the supporting document on [www.capitaess.co.uk](http://www.capitaess.co.uk)

Go to **Start, Run**. In the open box type, **SINFO** then click **OK**, this will initiate the utility displaying the following screen.

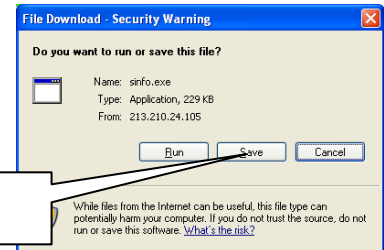
Please be patient as this may take a few moments to open.



A number of modifications have been made to the SINFO utility. This is now available for download.

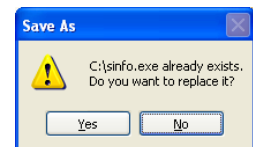


Internet explorer will open and a File Download screen will be displayed:

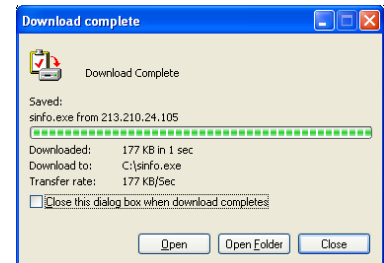


You will be asked where you want to save the file to, navigate to your SIMS folder as noted on previous page.

You may receive a message stating that the file already exists. If so select **YES** to this message.

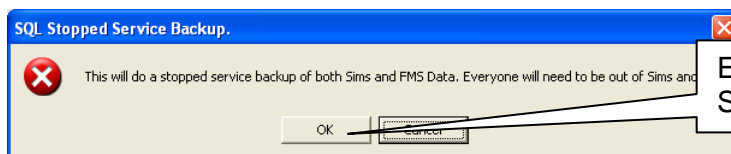
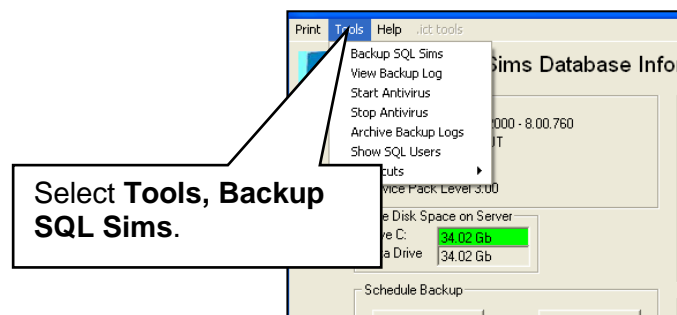


The file will download. When prompted select **Open** and the new version of SINFO will be displayed.

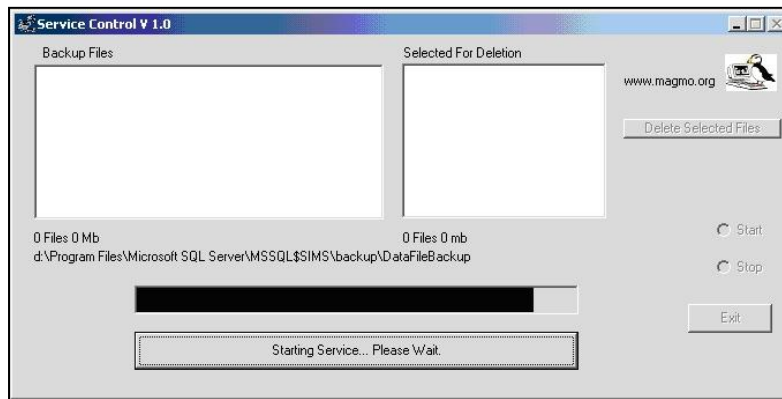


## Backing up your SIMS System.

The following screen will be displayed:

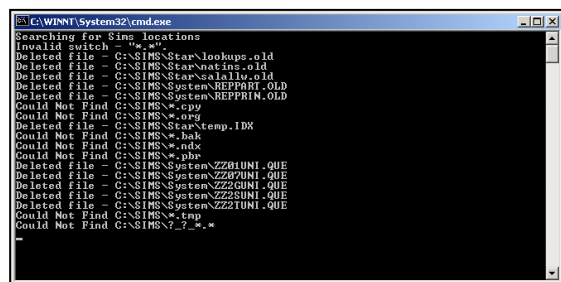


This screen will then appear as the SQL backup takes place – Please be patient.



When the backup is complete the routine will go through backing up the dBase data.

Once again please be patient as the dBase backup is carried out. Once this process is completed you will be returned to the SIMS Database Information screen.

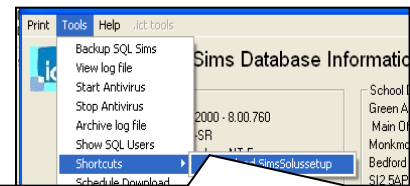


## Running the Upgrade

Select **Start | Run** and type **SINFO**

Within the Sims Database Information Centre (SINFO) click on

**Tools | Shortcuts | Download SimsSolussetup**



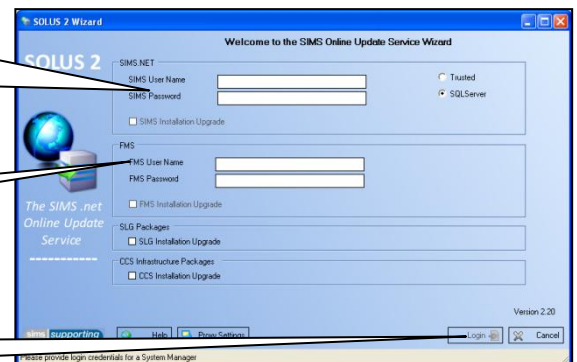
Click on **Download SimsSolussetup**

SOLUS2 will open automatically.

Login to the SOLUS update with your user name and password which has System Manager access.

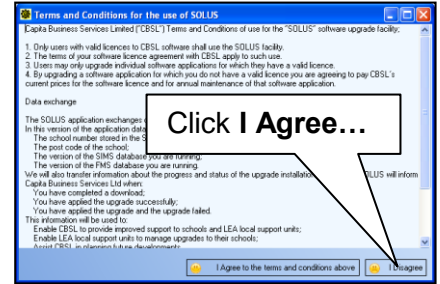
Enter FMS SYSMAN User Name and Password

Select **Login**

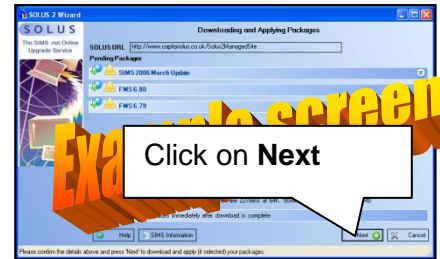


NB: Your FMS SYSMAN Password should be stored in a safe place since it was changed last upgrade. If the Password has been mislaid please email the helpdesk ([support@dotict.co.uk](mailto:support@dotict.co.uk)) from your bursar@ or head@ email account asking for this password again.

A Terms and Conditions screen similar to the one shown here may appear.



A screen similar to the one shown here will appear which will list all the updates required on your system:



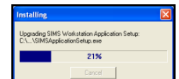
Click on **Yes** when prompted to confirm that you want to download the Update

The download will commence.

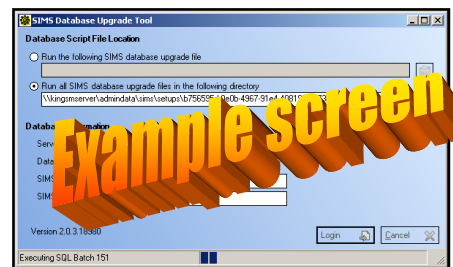
**Important Note:**  
There are many factors that can influence the speed with which SOLUS will download. These include the share of the bandwidth that the user is receiving locally.



During the download the SOLUS Wizard automatically processes the updates. You will see a number of upgrade screens – please be patient, as this may take some time.



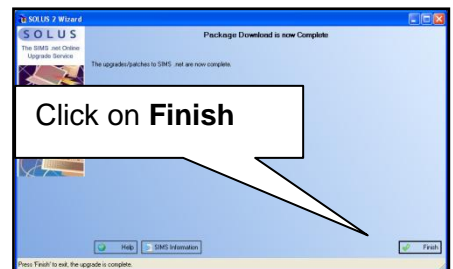
Once the download has been completed the following screen will appear:



There is no need to login as the information is automatically picked up.

This process may again take some time to complete.

Once the upgrade is complete, a similar screen to this will be displayed:

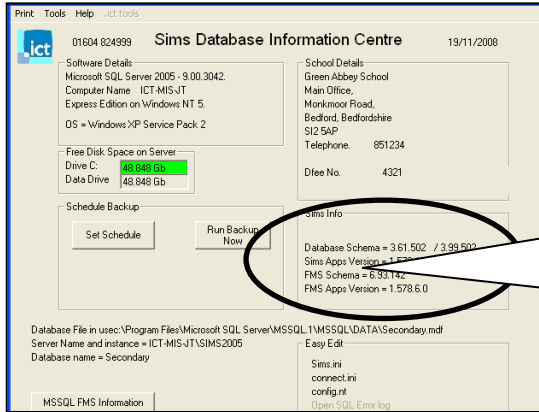


## Checking Your SIMS Version

Open **SIMS.net** and **FMS** as this will upgrade the version of the software.

Go to **Start | Run** In the open box type, **SINFO** then click **OK**

Please be patient as this may take a few moments to open.



Check that the data displayed in this area matches the following:

**Database Schema**      **3.61.749**

**3.99.502**

**SIMSApps Version**      **722**

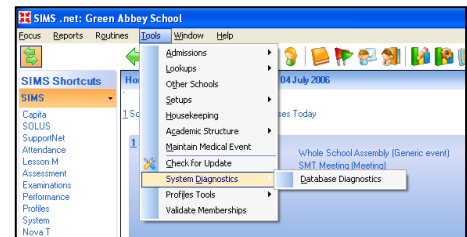
**FMS Schema**      **6.93.237**

Database Diagnostics checks that the SQL database has no errors within it.

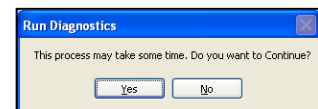
Login to **SIMS.net**;

Go to **Tools, System Diagnostics | Database Diagnostics**

Select **Run**.



A message will be displayed informing you that this process may take some time. Click **Yes**.



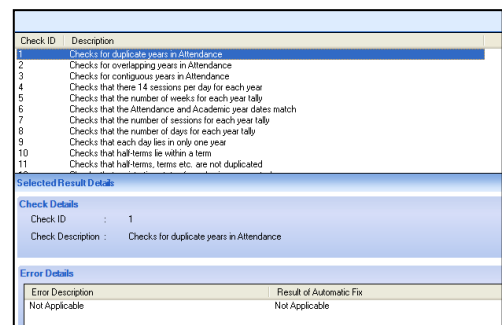
This will run checks on your current MSSQL database.

**N.B. This may take some time**

Checks are displayed at the top of the screen and by selecting each check you are able to identify any errors:

The text colour of the check indicates as follows:

- Checks shown in **Black** – no problems are found
- Checks shown in **Blue** – problems found but fixed automatically
- **Checks shown in Maroon** – problems found and not fixed



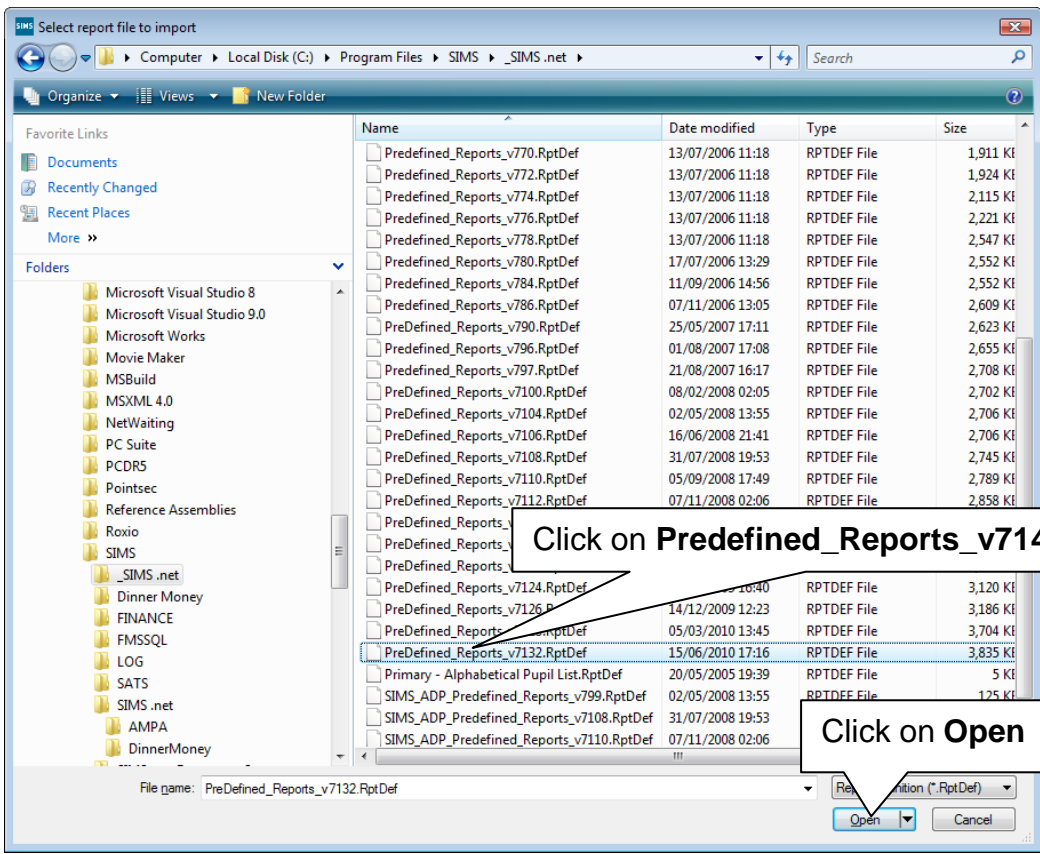
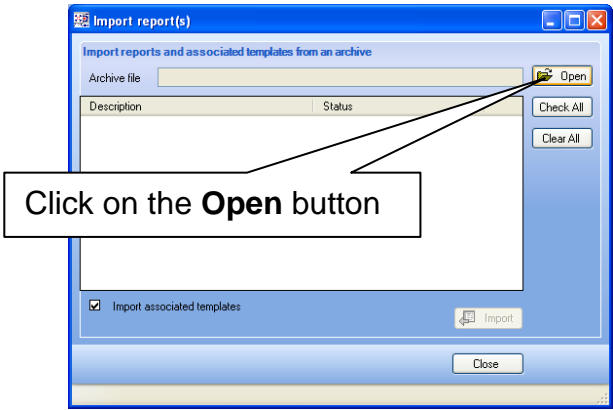
## Importing

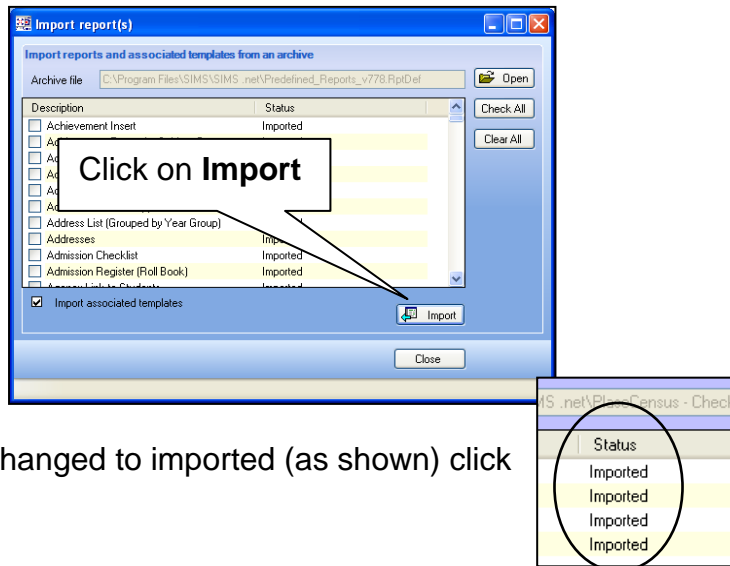
**NOTE: If any Maroon errors are encountered  
Contact the Capita .ict helpdesk on 01604 824999**

### Pre-Defined Reports into Sims.net

Log in to SIMS .net if necessary.

Choose route **Reports | Import**



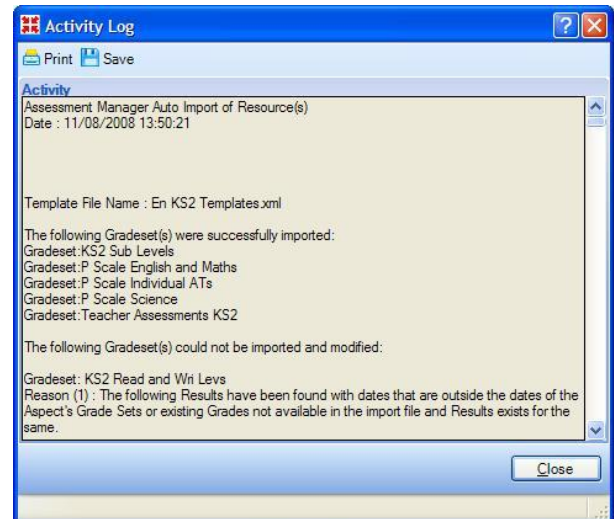
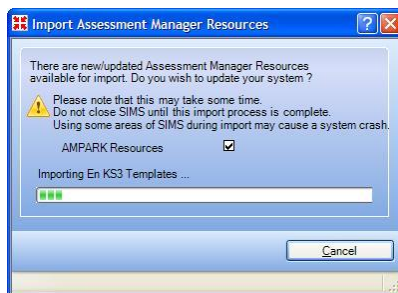
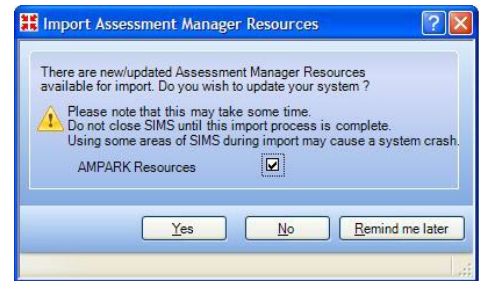


Once the status has changed to imported (as shown) click on Close.

### Automatic updates for AMPARK

If there are updates to AMPARK available, the following screen will appear when a user with Assessment Co-ordinator access first enters Assessment Manager following the upgrade.

- Click **Yes**. It is recommended that Assessment Manager users are not making changes to aspects or templates while this process takes place.
- The AMPARK resources are imported. The content of the import will vary with the type of school. The appropriate Key Stage files will be imported. Primary schools will have the option of importing the new tracking grid templates.
- This process will only take place after an update to AMPARK and will only need to be undertaken once for all workstations to use the materials.
- The usual report of the imported material concludes the process



### Upgrading SIMS .net on all Workstations

The first time you open SIMS.net or FMS after an Upgrade it may take some time – please be patient. It is necessary that you log into SIMS.net before trying to log into FMS after an upgrade.

**N.B.** The routine of opening an SQL module after the upgrade replaces the workstation setup routine that should be run on each workstation after an upgrade.

The distinct change with this upgrade is that users should be able to log on, open an SQL module and initiate this process without Administrator access thus easing the process for the System Administrator. However, if users experience problems with this routine then please log back on to the Workstation with the Administrator User ID and password and open an SQL module. Remember that you will also need to open an SQL module on the Server.



**When a user double clicks the SIMS.net icon for the first time after Upgrade the following screen will be displayed. This updates the SIMS System on the workstation.**

When all relevant files have been copied, a “**What’s New in this Release**” document will open giving the user information as to what modules have been updated.

This document should be used in conjunction with Module Changes as only brief module information is provided.

### FMS Workstation upgrade

With the FMS 6.142 upgrade completed, it will be necessary to log onto each workstation running FMS to carry out a workstation upgrade.

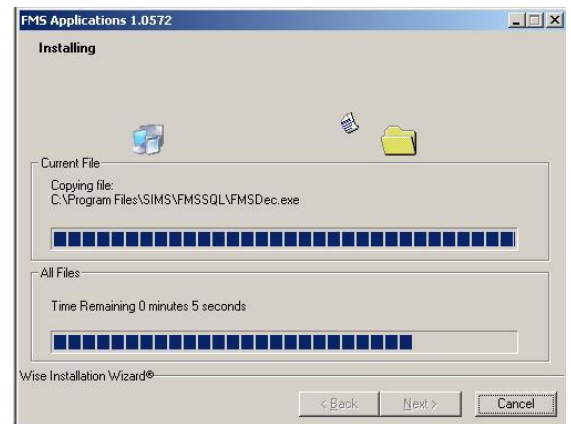
On each FMS workstation, click on the FMS icon . Further updates will take place,

You may be prompted to restart your system following the upgrade, this is not necessary, click on Cancel

When complete, check the version of the FMS

### Checking the FMS Version

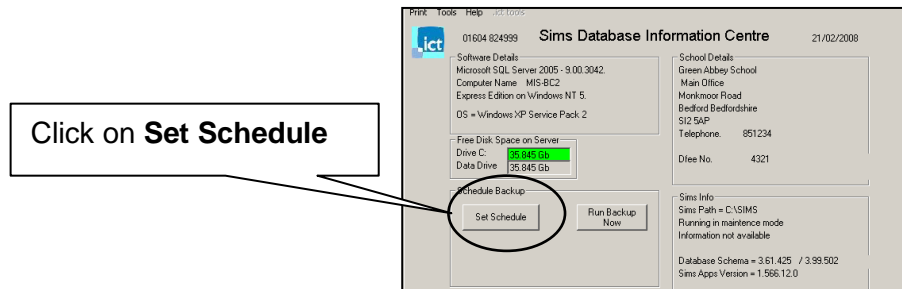
As a final confirmation that the upgrade has completed successfully, go to **Help | About FMS** the correct version is 6.142



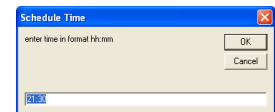
## NETWORK SCHOOLS ONLY

Please ensure that the SINFO scheduled back-up routine is reinstated on the server.

Go to **Start | Run** and type **SINFO** then click on the **OK** button.



Enter an appropriate time (in the format hh:mm) and click on the **OK** button.



**SINFO** will now minimise on the task bar and will run automatically every day at the scheduled time.

Any Problems with the upgrade process should be reported to the helpdesk on 01604 824999 for assistance